

STUDIES ON THE FAUNA OF CURAÇAO AND OTHER
CARIBBEAN ISLANDS: No. 78

SOME CARIBBEAN COLEOPTERA CERAMBYCIDAE

by

E. FORREST GILMOUR

(Museum & Art Gallery, Doncaster, England)

The notes on Cerambycidae in this paper are based on small collections of material sent to me by Dr. P. WAGENAAR HUMMELINCK of the Zoölogisch Laboratorium, Utrecht; Ir. R. H. COBBEN of the Laboratorium voor Entomologie, Wageningen; Dr. H. F. HOWDEN of the Entomological Research Institute, Dept. of Agriculture, Ottawa; the Museum Frey, Tutzing bei München; Dr. T. H. FARR of the Institute of Science, Kingston, Jamaica, as well as specimens from my own collection.

The opportunity is taken of listing material from new localities and of figuring a few species which have not previously been figured so far as I am aware, as well as describing a number of new genera and species.

The material covered in this paper comprises the following species:

- Stenodontes (Nothopleurus) maxillosus* (Drury), from Saint-Barthélemy;
Derancistrus (Solenoptera) bilineatus (Fabr.), from St. John;
Achryson ornatipenne Perroud, from Trinidad;
Achryson surinamum (Linn.), from Montserrat and Trinidad;
Chlorida festiva (Linn.), from St. Croix, Montserrat, Guadeloupe, and Trinidad;
Eburia octomaculata Chev., from St. Christopher;
Eburia decemmaculata (Fabr.), from St. Martin, St. Barthélemy, and St. Eustatius;
Eburia virginensis sp. n., from St. John, and St. Croix (Pl. I 1-2);
Elaphidion spinicorne (Drury), from St. Martin;
Elaphidion insulare Newman, from St. Martin, and Montserrat (Pl. II 1);
Elaphidion cobbeni sp. n., from St. Eustatius (Pl. II 2);
Elaphidion hummelincki sp. n., from St. Martin (Pl. II 3);
Stizocera howdeni sp. n., from Trinidad (Pl. I 3);

Psyrassa trinidadensis sp. n., from Trinidad (Pl. I 4);
Compsa macra Thomson, from Trinidad (Pl. III 1);
Heterachthes quadrimaculatus (Fabr.), from St. Croix, and St. Eustatius;
Phormesium trinidadensis sp. n., from Trinidad (Pl. III 2);
Cylindera flava (Fabr.), from Cayman, St. Martin, Saba, Barbuda, and Montserrat;
Methia necydalea (Fabr.), from St. Barthélemy, and St. Eustatius;
Neoclytus araneiiformis (Olivier), from Saba;
Trachyderes succincta (Linn.), from Trinidad;
Oxymerus luteus (Voet), from Trinidad;
Caribbeana hebes gen. n., sp. n., from St. Eustatius (Pl. III 3);
Cacostola apicalis sp. n., from Trinidad (Pl. III 4).

Subfamily PRIONINAE

Tribe MACROTOMINI

Subtribe STENODONTINA

Stenodontes (Nothopleurus) maxillosus (Drury)

ST. BARTHÉLEMY (St. Bartholomew, St. Barts): Lorient, 3. VI. 1949, Hummelinck (2♂, 1♀).

Tribe ANCISTROTINI

Subtribe DERANCISTRINA

Derancistrus (Solenoptera) bilineatus (Fabr.)

ST. JOHN: Chocolate Hole, 30 m, 19. VI. 1955, Hummelinck (1♂).

Subfamily CERAMBYCINAE

Tribe ACHRYSONINI

Achryson ornatipenne Perroud

TRINIDAD: (E. F. Gilmour Coll., 1 specimen).

Length: 10.5 mm. Breadth: 2.3 mm.

Previously only recorded from Guadeloupe.

Achryson surinamum (Linn.)

MONTSERRAT: Woodlands, 250 ft., XI. 1959, C. R. Proctor (1 spec., Inst. Sci. Kingston).

TRINIDAD: St. Augustine, IV. 1959, H. F. Howden (1 spec.); X. 1959, H. F. Howden (1 spec.); I.IV.1959, F. D. Bennett (2 spec.). Santa Margarita Hill, V. 1959, at light, H. F. Howden (2 spec.).

Tribe HESPEROPHANINI

Chlorida festiva (Linn.)

ST. CROIX: Canaan, 22. VI. 1955, Hummelinck (1♀).

MONTSERRAT: Woodlands, 250 ft., XI. 1959, C. R. Proctor (1♀, Inst. Sci. Kingston).

GUADELOUPE: 7. VIII. 1957, J. Boyes (1♀).

TRINIDAD: St. Augustine, VII. 1959, H. F. Howden (1 spec.).

Eburia octomaculata Chev.

ST. CHRISTOPHER (St. Kitts): Frigate Bay, salt pond, 20. VII. 1955, Hummelinck (1♂).

Eburia decemmaculata (Fabr.)

ST. MARTIN: Philipsburg, 1955, Hummelinck (1♀); Philipsburg, I. 1957, at light, R. H. Cobben (1♂). Lowlands, 21. IX. 1957, R. H. Cobben (1♂).

ST. BARTHÉLEMY: Gustavia, 4. VI. 1949, Hummelinck (2♀).

ST. EUSTATIUS: Oranjestad, I. 1957, at light, R. H. Cobben (1♂).

Eburia virginensis sp. nov.

(Plate I figs. 1-2)

Male (Pl. I 1). Moderately large, robust, elongate. Light ferruginous; variably densely and sparsely covered with light tawny pubescence, which is thin on the pronotum laterally and the anterior two thirds of the elytra, except suturally and at extreme margin; very dense on the vertex between the eyes and in the emargination, on a narrow band margining above the coarsely rugose latero-pronotal area, and the underside. Pronotal disc with two feebly tumescent black tubercles slightly premedially. Elytra each with two geminate glabrous, feebly tumescent, longitudinal, flavous, eburneous, maculae - these in close apposition and con-

tiguous: – the basal pair with the external slightly shorter, extending to about basal sixth of elytra; the median pair lying between a little premedially and about apical two-fifths, the inner slightly shorter; the basal pair slightly dark ferruginous behind, and the median pair darkened on derm at both ends. Antennae and legs only very sparsely pubescent, except the tarsi more densely.

Head very coarsely and fairly closely punctured, except apices of antennal tubercles, interstices fairly finely and fairly closely punctured; antennal tubercles moderately strong, moderately separated, concave between. Eyes coarsely faceted, very strongly emarginate; very large, extending well beneath onto the submentum laterally; fairly closely approaching above, separated by about one and a quarter times the breadth of an upper lobe. Antennae fairly robust, of moderate length, about one and two-fifths as long as the body; scape moderately swollen, not very elongate; segments unarmed; third segment about one and a third times as long as the scape; fourth segment about an eleventh shorter than the third; fifth and sixth segments each about equal to fourth; following segments to tenth very gradually decreasing; apical, eleventh segment a little more elongate, about equal to fourth; basal segments coarsely, rather sparsely punctured, these becoming much finer towards the apical segments.

Pronotum as broad as long; subcylindrical; broadly and rather regularly rounded laterally, completely unarmed; broader basally than apically; with a very narrow apical transverse sulcus and a broader posterior one, which is almost obsolete medially, and rather deeper laterally; disc with two feeble, fairly broad, slightly premedian, black subacute tumescences, and a short longitudinal, median to slightly premedian, glabrous line; laterally from the border of the disc a large very strongly rugosely punctured area, which extends completely across the prosternum and unites with that of the other side, this area very sparsely pubescent; disc above covered with large shallow reticulate alveolate punctation, except on the two tubercles and the short median glabrous line. Scutellum slightly elongate, subparallel-sided basally, thence subtriangular to apex; very finely and fairly closely punctured.

Elytra elongate, three times as long as pronotum; base about a

sixth wider than pronotum at widest; gradually narrowing to apex, feebly constricted about medially, broadly rounded to apices, which are slightly obliquely truncate, each angle moderately strongly spinous, the sutural angle less strong than the marginal; each elytron with two geminate, closely juxtaposed, eburneous maculae; basal pair with outer slightly shorter; median pair with outer longer than inner; about basal two-thirds up to apices of median maculae very strongly, coarsely and closely punctured, thereafter the punctures very much finer to the apex, and also finer along suture from scutellum; interstices fairly closely micropunctured.

Underside with prosternum very strongly rugosely punctured; prosternal process finely and fairly closely punctured; strongly raised, as high as coxae; strongly and broadly, regularly rounded above and anteriorly; vertically declivous posteriorly, with a low, obtuse median tumescence at the posterior upper border; moderately broad, almost a third as broad as a procoxal cavity. Mesosternal process very broad, about twice as broad as the prosternal, about two-thirds as broad as a mesocoxal cavity; strongly declivous anteriorly almost from apex; broadly explanate apically, the lateral angles strongly produced into concavities in the mesocoxae; apex broadly, strongly, semicircularly emarginate. Apical ventrite slightly transverse, slightly shorter than preapical, broadly rounded latero-apically, becoming very feebly emarginate medially. Pygidium broad, very broadly rounded latero-apically, apex with a shallow, broad, median emargination.

Legs elongate, moderately slender; femora only feebly swollen to apices, but the anterior a little more strongly; meso- and meta-femora bispinose apically, those on the former weaker, the external on the meso-femora very short, scarcely more than broadly angular, scarcely a quarter as long as the inner; those on metafemora rather stronger, the outer only a little more angularly, broadly produced, scarcely half as long as the inner. Tarsi moderately elongate and slender, except the anterior a little broadened; first metatarsal segment about equal to the following two segments united.

Female (Pl. I 2). [Although not from the same island locality as the male, I consider that the female described here almost certainly belongs to this species].

Similarly coloured to the male, but with several conspicuous structural differences as follows: Pronotum distinctly narrower and tapering from base to apex; about a fifth longer than broad; apex scarcely three-quarters as broad as base; slightly rounded laterally, with a broad, shallow prebasal constriction; completely unarmed laterally; discally with similarly two discal premedian black low tubercles, and sublaterally, at about anterior quarter, a small blackish, subglabrous macula, which is not, or only extremely feebly tumescent; the conspicuous lateral coarsely rugosely punctured area of male, completely lacking, simply alveolate-punctate. Elytra more elongate, about three and a quarter times as long as pronotum; the two pairs of geminate eburneous maculae similarly placed, but distinctly more elongate: the basal pair on each elytron extending to about basal two-ninths, the median pair extending from about basal three-tenths to apical two-fifths. Antennae shorter, scarcely longer than body, exceeding elytral apex only by about the apical segment.

Underside similar to that of male, but prosternum simply very coarsely punctured: prosternal process rather more strongly tumescent and sub-explanate apically, and slightly narrower; mesosternal process similar, but the apical emargination triangular; apical ventrite more elongate, about equal in length to preapical, rather narrower and less narrowed to apex, which is similar in shape to that of male. Pygidium similar to that of male but more sub-parallel-sided.

Legs scarcely more slender than those of male; mesofemoral apical external spine a little stronger than in male, about a third as long as the inner; the external spines on metafemora stronger still, about half as long as the inner.

Length: 18.5–19.5 mm. Breadth: 4.3–4.5 mm.

ST. JOHN: S. of Cruz Bay, 18. VI. 1955, at light, Hummelinck (2♂).

ST. CROIX: Canaän, 22. VI. 1955, at light, Hummelinck (1♀).

Holotype (male) and Allotype (female) placed in the E. F. Gilmour Collection. Paratype (male) placed in the Zoological Museum, Amsterdam.

This species is most closely allied to *Eburia quadrimaculata* (Linn.) but differs in a few primary ways, such as the completely unarmed

pronotum in both sexes, which in *quadrifasciata* has a small spine in male and an obsolete postmedian tubercle in female. The femora cannot be called truly bispinose apically in this new species, particularly the mesofemora, which are at most acutely angular, whereas in *quadrifasciata* they are proportionately longer at both apices and distinctly, narrowly spinous.

Tribe ELAPHIDIONINI (Phoracanthini)

Elaphidion spinicorne (Drury)

ST. MARTIN: Philipsburg, 25. V. 1949, Hummelinck (1♀); VI. 1955, Hummelinck (1♂); XI. 1956, at light, R. H. Cobben (2♀).

Elaphidion insulare Newman

(Plate II fig. 1)

ST. MARTIN: Philipsburg, 28. V. 1949, Hummelinck (1♀).
MONTSERRAT: Woodlands, 250 ft., XI. 1959, C. R. Proctor (1♀).

Elaphidion cobbeni sp. nov.

(Plate II fig. 2)

Male. Moderate-sized, elongate, rather narrow. Black; with variably dense, very pale, tawny-white pubescence. In general nitid, except where pubescence is dense as follows: round the eyes; in one or two ill-defined latero-discal pronotal longitudinal areas; scutellum laterally; on the elytra in rather broken vittae from base inside humerus extending to middle of disc, and lateral to this; more vaguely along suture on posterior half and some vague streaks on posterior half, as well as lateral declivity; elsewhere very sparsely pubescent; elytral apex with a number of long erect pale setae; antennae and legs variably densely pale tawny-white pubescent; underside sparsely pale pubescent, more dense laterally.

Head sparsely, coarsely punctured; antennal tubercles widely separated, low, almost plane between, scarcely concave, with numerous longitudinal rugae continued onto frons, which is strongly transverse. Eyes very coarsely faceted, very strongly emarginate,

lower lobe extending forward almost to level of antennal socket anteriorly; upper lobes widely separated by about two and a quarter times the breadth of an upper lobe. Labrum fairly short, strongly transverse, anterior border very feebly emarginate, lateral angles broadly rounded. Palpi with apical segment moderately broadly subtriangular, apices moderately obliquely subtruncate. Antennae almost equal in length to body; segments three to seven unispinose at internal apical angle, the spine very large and curved on basal segments, rapidly diminishing, and very small on seventh segment; scape robust, strongly swollen apically; third segment slightly shorter than scape; fourth about a sixth shorter than third; fifth about equal to third; sixth equal to fourth; seventh about a fifth shorter than sixth; eighth to tenth segments gradually decreasing; eleventh, apical segment slightly longer than preapical; basal segments fairly coarsely, not very closely punctured, and rather nitid; segments from outer part of sixth and seventh and apical segments wholly, extremely finely and closely punctured and matt; segments from sixth gradually more increasingly depressed and angulate along external border.

Pronotum large, as broad as long, almost as broad medially as elytral base; a little narrower apically than basally; broadly rounded laterally, feebly irregular, a little more strongly over anterior part; unarmed laterally; disc with a broad, complete, median, glabrous, impunctate median vitta, which is strongly narrowed at base and apex; slightly lateral to this, slightly premedially on each side, a very feebly raised, small, rounded, glabrous tubercle; remainder very coarsely and strongly punctured, rugosely in greater part. Scutellum short, very strongly transverse, broadly rounded; very finely and closely punctured laterally where densely pubescent, fairly narrowly glabrous and impunctate on midline.

Elytra elongate, fairly narrow, three times as long as pronotum; subparallel laterally to about middle, thence gradually rounded to the apices which are each rather strongly, not very broadly, semi-circularly emarginate, both angles about equally, stoutly, not very elongately, angularly subspinose; from base to past middle very strongly and coarsely, fairly irregularly punctured, variably closely, becoming finer posteriorly and over apical third much smaller,

shallower and sparser; interstices very finely punctured, very sparsely in the main, where strongly nitid, but closely where the pubescence is dense.

Underside nitid, particularly medially where almost glabrous; sparsely and coarsely punctured on the sterna; laterally and on abdomen fairly finely punctured, very sparsely medially, more closely laterally. Prosternal process strongly raised, subplanate, feebly declivous anteriorly; projecting a little apically; so that posterior border is vertically concave; about half the breadth of a procoxal cavity; sulcate laterally, and with two short median apical shallow sulci; glabrous and impunctate, or nearly so. Mesosternal process broad, about one and a quarter times as broad as prosternal, about two-thirds as broad as a mesocoxal cavity; strongly declivously rounded anteriorly; suddenly explanate apically, the lateral projections inserted into mesocoxal depressions; apex rather strongly semicircularly emarginate. Apical ventrite transverse, broadly rounded, including apex, very slightly longer than preapical; more densely punctured basally, and very closely micropunctured apically.

Legs moderately elongate and fairly robust; femora moderately sub-pedunculo-clavate, the posterior a little less strongly swollen; meso- and metafemora angular at inner apices, the external angles rounded and scarcely produced on the metafemora; inner angle on mesofemora about rectangular, on metafemora slightly produced and a little acute. Tarsi of moderate length, the anterior robust and broadened; the metatarsi only moderately slender, first segment fairly short, scarcely more than a half as long as the following two segments united.

Female. Unknown.

Length: 14.8 mm. Breadth: 3.5 mm.

ST. EUSTATIUS: I. 1957, at light, R. H. Cobben (1♂).

Holotype (male) placed in the E. F. Gilmour Collection. Unique.

Named after the collector, Ir. R. H. COBBEN, who has kindly allowed me to retain the type.

This distinct new species is most closely allied to *Elaphidion glabratum* (Fabr.) but may be immediately distinguished by the

lack of internal meso- and metafemoral spines, the much less densely pubescent head and pronotum and different pronotal discal structure, more shortly spinous elytral apices, the sulcate prosternal process, as well as other minor differences such as the pubescence much lighter in colour and the black derm.

***Elaphidion hummelincki* sp. nov.**

(Plate II fig. 3)

Female. Moderate sized, elongate, fairly narrow. Ferruginous; densely covered above and below with pale flavous-grey pubescence, with a few glabrous areas as follows: pronotum with a median complete glabrous narrow vitta, which has two broadened areas in its length, one small preapically and a larger one median to postmedian; on each side, slightly premedially a small oval macula and on each side at base a short, glabrous, slightly oblique vitta; scutellum with a narrow glabrous median line. Elytra fairly uniformly pubescent in main, with faint traces of two longitudinal discal subglabrous vitta and less dense pubescence centrobasally and postmedially (but this may be due to rubbing). Ventral surface glabrous or nearly on submentum posteriorly, prosternum medially over the prosternal process; mesosternal process, continuing medially on metasternum; abdomen medially over a band which gradually and strongly widens from the intercoxal process to abdominal apex. In general with very sparse, erect, long pale setae, which on the elytra only appear to be present at apex. Antennae fairly sparsely pubescent. Legs fairly densely pubescent, particularly the femora, which have numerous small glabrous maculae.

Head coarsely and closely punctured, somewhat rugosely in places; frons strongly transverse, twice as broad as long. Eyes very coarsely faceted, very strongly emarginate, lower lobe extending forward to the level of the anterior border of the antennal socket; upper lobes widely separated by about two and a quarter times the breadth of an upper lobe. Labrum short, very strongly transverse, anterior border about straight. Palpi with apical segments very broadly subtriangular, apices feebly obliquely subtruncate. An-

tennae about one and a quarter times as long as body; segments three to five unispinose at inner apical angle, that on third segment very strong, that on fifth quite small, but very distinct; scape robust, about equal to third segment, which is only very feebly longer than fourth; fifth segment about a sixth longer than fourth; sixth and seventh slightly decreasing, the latter about equal to third; eighth and ninth subequal to seventh, tenth slightly shorter; apical, eleventh, slightly longer than preapical, strongly depressed and curved preapically; basal segments rather coarsely punctured, these becoming much finer towards the apical segments.

Pronotum as broad as long; somewhat subcylindrical; rather distinctly broader basally than apically; sides broadly, moderately, rather regularly rounded laterally, only feebly irregular; disc slightly convex, a little irregular due to very feebly raised glabrous areas as follows: a median longitudinal line and slightly premedially two small oval areas, one on each side, which are impunctate or nearly, and nitid; remainder very coarsely, not in the main confluent punctured, usually separated by at least the breadth of a puncture, interstices fairly finely, not very closely punctured; pubescence concealing much of sculpture. Scutellum short, very strongly transverse, broadly rounded; finely and closely punctured laterally, where densely pubescent, impunctate on median glabrous line.

Elytra elongate, fairly narrow, not quite three times as long as the pronotum; base about a seventh broader than the pronotum medially; laterally subparallel to about middle, then broadly rounded, becoming more strongly narrowed to the apices which are moderately emarginate with both angles spinous, the sutural and marginal spines of about equal length, but the marginal broader and stouter; in the main very strongly and coarsely, separately punctured, these closest along an irregular subsutural band, somewhat sublinear latero-discally, all becoming smaller post-medially to the apex, interstices very finely and variably closely punctured.

Underside moderately coarsely, sparsely, shallowly punctured in parts laterally, interstices very finely and most closely punctured laterally, the punctures extremely sparse or lacking on the median

glabrous or subglabrous areas. Prosternal process broad, strongly raised, and distinctly higher than the coxae anteriorly, gradually planately declivous anteriorly, slightly more than half the breadth of a procoxal cavity; slightly, but distinctly rotundately explanate apically, with a feeble median apical emargination, apex fairly acutely rounded and distinctly projecting, thence vertical. Mesosternal process very broad, about one and a third times as broad as the prosternal process preapically, about two-thirds as broad as a mesocoxal cavity; rather strongly rounded anteriorly; rather suddenly rotundately explanate apically, the rounded lateral angles projecting into depressions in the mesocoxae; apex strongly subacutely emarginate. Apical abdominal ventrite rather elongately suboval, transversely about one and a quarter times as long as the preapical, very broadly rounded, almost subtruncate apically, the lateral angles broadly rounded.

Legs only moderately elongate, and fairly slender; femora moderately clavate, the posterior least strongly swollen; meso- and metafemora not spinose apically, external angle scarcely produced and rounded, internal angles feebly produced, those of mesofemora rounded, those of metafemora slightly stronger and only feebly subacutely rounded. First metatarsal segment about two-thirds as long as the following two segments united.

Male. Unknown.

Length: 14 mm. Breadth: 3.4 mm.

ST. MARTIN: Philipsburg, 24. VI. 1955, Hummelinck (1♀).

Holotype (female) placed in E. F. Gilmour Collection. Unique.

I have named this species after Dr. P. WAGENAAR HUMMELINCK of the Zoölogisch Laboratorium der Rijksuniversiteit, Utrecht, who collected the specimen and who has so kindly given me the opportunity of examining the Cerambycidae which he collected in certain Caribbean Islands, and has very generously allowed me to retain the type.

This new species is very similar at first glance to *Elaphidion glabratum* Fabr., which has been recorded from neighbouring islands, but it may be immediately distinguished through the meso- and metafemora not spinose apically, and the antennae only uni-

spinose at apices of the third to fifth segments, not the third to seventh. It is perhaps also somewhat allied to *Elaphidion pulverulentum* Ol., which has similarly unarmed femora, but this latter species only has spines on the third and fourth antennal segments, has the pronotum rather differently glabrous in part, amongst other differences.

Tribe SPHAERIONINI

Stizocera howdeni sp. nov.

(Plate I fig. 3)

Male. Of medium size, elongate, narrow, wholly covered with erect, very long and moderately short intermixed pale setae. Head and thorax black, nitid. Scutellum ferruginous, clothed with fine greyish pubescence; elytra light ferruginous, with apical part black over an area from about apical two-fifths suturally and apical third marginally; nitid. Antennae and legs light ferruginous. Underside with meso- and metasterna and first abdominal segment fairly dark ferruginous, abdomen from second segment pitchy-ferruginous, becoming almost black to the apex; coxae, mesosternum, metathoracic episterna and side of metasternum finely and fairly thinly greyish pubescent.

Head irregular; frons strongly transverse, slightly concave, with a deep transverse sulcus inferiorly, and a strong median line which runs to about middle of vertex; frons feebly longitudinally rugose on each side of midline; posterior part of head strongly, coarsely, subrugosely punctured, vertex sparsely and more finely punctured; antennal tubercles low, very feebly and broadly raised; epistomum broadly truncate apically; labrum a little produced, rather strongly transversely convex, broadly, feebly emarginate apically; apical palpal segments moderately robust, a little broadened, obliquely truncate apically. Antennae moderately elongate, about one and a sixth times as long as body; scape moderately strongly, fairly regularly swollen, slightly curved, moderately elongate, extending well past the posterior border of the eye; third segment about an eighth longer than scape, about a seventh longer than fourth;

fifth segment longer than fourth, very slightly longer than scape; sixth and seventh very slightly increasing; following four segments about subequal to seventh; segments three to eight distinctly longitudinally unicarinate above; segments three to seven spinose at internal apices, gradually decreasing apically, that at apex of third to fifth very elongate and strong; all segments setose, shortly on the apical, most lengthily below scape to seventh segment; scape rather coarsely and sparsely punctured, nitid; remaining segments fairly finely and fairly closely punctured, rather matt.

Pronotum feebly elongate, about a tenth longer than broad; subcylindrical; apex and base about equal in breadth; posterior border feebly bisinuate; laterally slightly, a little irregularly, rounded; broadly and slightly constricted prebasally; disc rather strongly convex, feebly obtusely, irregularly tumid, mainly a little premedially on each side, and one on each side before the basal transverse sulcus; disc distinctly, moderately strongly and obtusely transversely wrinkled, (except over band at anterior border), these broken over a smooth longitudinal area on middle of disc and forming partial whorls on the two premedian very obtuse tumescences; nitid; very sparsely, fairly coarsely punctured, with a few very finely punctured areas, mainly laterally, but in the main almost impunctate. Scutellum transverse, subparallel-sided for a short baso-laterally length, thence apex very broadly rounded; finely and fairly closely punctured.

Elytra elongate, subcylindrical, about three and a half times as long as pronotum, very slightly more than three times as long as broad; subparallel-sided laterally over about basal half, thence gradually attenuate, feebly rounded, to the apices, which are rather broadly, inwardly obliquely, moderately emarginate-truncate, marginal angle broadly and strongly spinously produced, sutural angle with a small, very short, broad spine; nitid; basally very coarsely, fairly closely punctured, these rapidly becoming smaller and more sparse posteriorly, irregularly; each puncture bearing an erect seta; interstices almost impunctate, with only a very few, very small punctures.

Underside in main glabrous, mainly nitid, except prosternum a little matt, with a few feeble transverse rugae; in the main only

very sparsely, fairly coarsely punctured, each bearing a long semi-erect seta; interstices very sparsely, very finely punctured; sides of metasternum, where thinly pubescent, fairly closely micropunctured. Prosternal process narrow, about a fifth to sixth as broad as a procoxal cavity; slightly curved above, much lower than coxae, shallowly medio-longitudinally sulcate, strongly curved posteriorly, apex a little explanate; procoxal cavities quite widely open posteriorly. Mesosternal process broad, about four times as broad as prosternal, about two-thirds as broad as a mesocoxal cavity; declivous anteriorly; broadly and rather strongly emarginate apically, lateral angles subobtusely lobate posteriorly; with a few very large punctures on the anterior declivity. Mesocoxal cavities closed to mesepimera. Abdominal segments smooth and nitid; apical ventrite very slightly shorter than the preapical, very broadly rounded. Pygidium broad; apex broadly truncate, with lateral angles broadly rounded, and with a very feeble median emargination.

Legs moderately elongate and slender, apex of metafemora extending to about posterior border of the fourth, preapical, ventrite; femora strongly pedunculo-clavate, the anterior only shortly pedunculate, apices of intermediate broadly acutely angularly produced, the external angle less so, metafemora with apical angles more strongly, broadly, about equally subspinously produced; tibiae distinctly finely longitudinally carinate both internally and externally, those on the anterior less distinct.

Female. Unknown.

Length: 10.7 mm. **Breadth:** 2.25 mm.

TRINIDAD: Santa Margarita Hill, V. 1959, at light (1♂).

Holotype (male) in Entomological Research Institute, Department of Agriculture, Ottawa, Canada. **Unique.**

I have great pleasure in naming this species after Dr. H. F. HOWDEN, of the Entomological Research Institute, Ottawa, who has so kindly sent me West Indian and Neotropical material for examination.

This new species is somewhat allied to *Stizocera rugicollis* (Serv.) but may be immediately distinguished by having the legs and

antennae completely light ferruginous as well as other differences. From *Stizocera horni* Melzer and *S. laceyi* Linsley, which also have the elytral apex blackish, it may be distinguished through having the head and prothorax black, not ferruginous, and the differing pronotal sculpturation. It appears to be rather similar to *Stizocera nigroapicalis* Fuchs (1961) through having head, thorax and apical part of elytra black, but may be easily distinguished by the abdomen becoming black apically, the grey, not light yellow pubescent scutellum, and at least the differently spinous apices of the meso-femora.

***Psyrassa trinidadensis* sp. nov.**

(Plate I, fig. 4)

Male. Medium-sized, narrow, elongate; in general mainly fairly light ferruginous, including antennae and legs, except head, apical fifth of elytra extended along suture to not quite apical third, blackish or pitchy-black, and abdomen with apical three segments pitchy. With scattered, very sparse, erect, short pale setae.

Head with frons rather small, strongly transverse; longitudinally, irregularly, rugosely punctured; rest very coarsely and mainly closely punctured, but sparse on a small area on middle of vertex, with a fine, indistinct median line which is deeper between antennal tubercles, but only extends posteriorly to level of posterior border of eyes; antennal tubercles slightly raised, somewhat subacute apically, only moderately widely separated; epistomum broadly truncate apically; labrum short, broad, broadly and very feebly emarginate apically; apical palpal segments fairly robust, rather broadened, obliquely truncate apically. Eyes very large, very coarsely faceted, very strongly swollen, extending onto frons in front of antennal tubercles, strongly emarginate; lower lobes extremely large, extending well onto the submentum below, gena very short; upper lobes moderately approaching, separated by about the breadth of an upper lobe. Antennae elongate, about one and a quarter to almost one and a third times as long as body; scape moderately strongly swollen towards the apex, only moderately long, extending to about the posterior border of the eye,

coarsely, and only fairly closely punctured; third segment one and a half times as long as scape, about one and a quarter times as long as fourth; fifth about equal to third; six and seventh each about equal to fifth; eighth to tenth very slightly decreasing; eleventh, apical segment slightly longer, about equal to third; segments three to seven finely longitudinally carinate above, feebly on the latter, and on third to sixth also beneath; segments three to five spinose at their apex internally, that on third of only moderate length, that on fourth only a third to a half as long, that on fifth segment very small; segments from third very finely and closely punctured, and matt; segments from second to eighth with sparse setae below.

Pronotum slightly longer, about a fifth or sixth, than broad; subcylindrical; slightly wider basally than apically; anterior border about straight, posterior border rather strongly concave; laterally broadly, gradually rounded to a little postmedially, with a moderate prebasal constriction; smooth, nitid; disc moderately, regularly convex; coarsely, fairly sparsely punctured, except on a narrow longitudinal medio-discal impunctate band; remainder, impunctate. Scutellum a little broadly subtriangular, apex about rectangularly rounded; moderately strongly convex; finely, not very densely pubescent; finely, not very closely punctured.

Elytra very elongate, subcylindrical, about three and two-third times as long as broad, about four times as long as pronotum; almost subparallel-sided, but very gradually narrowing to about apical quarter, thence broadly rounded to apices which are slightly inwardly obliquely truncate-emarginate, the marginal angle lengthily and strongly spined, the sutural with a short acute spine; fairly evenly convex; coarsely, only moderately closely, irregularly punctured, basally the punctures separated by about two to three or four times their own width, gradually becoming finer and somewhat more sparse to apices; nitid; interstices almost impunctate.

Underside nitid in main, except basal median half of prosternum, including the process, moderately finely rugosely-punctured, matt, and finely pubescent, and mesosternum fairly coarsely and fairly closely punctured, rather matt, and finely pubescent; prosternum finely, obsoletely transversely rugose; sides of metasternum, metathoracic episterna and sides of abdomen, fairly finely and

variably closely punctured, the two former matt, and all finely greyish pubescent; remainder of metasternum and abdomen coarsely, not very closely punctured. Prosternal process very narrow, low, rounded, very narrowly and strongly sulcate medially, and strongly marginate laterally; about an eighth or ninth as broad as a procoxal cavity; procoxal cavities quite broadly open posteriorly. Mesosternal process broad, about four times as broad as prosternal, almost two-thirds as wide as a mesocoxal cavity; almost plane above, fairly strongly but gradually declivous anteriorly, and feebly, broadly tumescent; apically rather strongly and acutely explanate, the angles acutely rounded and projecting into the mesocoxae, apex broadly and moderately strongly emarginate. Mesocoxal cavities open to mesepimera. Abdominal segments smooth, rather distinctly decreasing in length posteriorly; apical fifth, ventrite strongly transverse, about two-thirds as long as preapical; apex broadly and strongly emarginate. Pygidium broadly rounded apically.

Legs rather elongate and slender, apex of metafemora extending to about posterior border of third abdominal ventrite; femora gradually and not very strongly swollen, the anterior most so, the posterior slender, apices obtusely angular, but unarmed; tibiae strongly longitudinally carinate both internally and externally; tarsi elongate and rather slender, first metatarsal segment equal to the following two segments united.

Female. Unknown.

Length: 10–12 mm. Breadth: 1.8–2.25 mm.

TRINIDAD: Santa Margarita Hill, V. 1959, at light (5♂).

Holotype (male) and two Paratypes (males) in Entomological Research Institute, Department of Agriculture, Ottawa; one Paratype (male) placed in the E. F. Gilmour Collection.

This new species is probably most closely allied, at least in its bicoloured elytra to *Psyrassa basicornis* Pascoe, of Mexico, the genotype. From this species it may be immediately distinguished through having the head black, not ferruginous, and only the apical fifth of the elytra black, not the posterior half.

The only other so far known species without unicolorous elytra is *Psyrassa subpicea* (White), in which the elytra apex is only somewhat darkened, but from which it may be distinguished through the antennae only having the third to fifth segments spinous, not to sixth, and on the third not very long and not recurved.

Tribe IBIDIONINI

Compsa macra Thompson

(Plate III fig. 1)

TRINIDAD: Maracas Valley, 30. I. 1955, at light, Hummelinck (1 spec.).

Heterachthes quadrimaculatus (Fabr.)

St. CROIX: Canaán, 22. VI. 1955, at light, Hummelinck (1 spec.).

St. EUSTATIUS: I. 1957, at light, R. H. Cobben (3 spec.).

Phormesium trinidadensis sp. nov.

(Plate III fig. 2)

Male. Medium sized, narrow, elongate. In general dark ferruginous, head and underside a little lighter. Antennae, legs and underside finely and thinly greyish pubescent; pronotum silky silvery-grey pubescent, except on a medio-discal elongate-oval glabrous area; scutellum rather densely silvery-grey pubescent. Elytra glabrous and nitid except for about five sublinear rows of erect ferruginous setae; each marked with two pale flavous translucent areas as follows: a very broad fascia between about basal eighth and middle, extending to margin, slightly narrowed anteriorly on lateral declivity, and almost touching suture medially, anterior border somewhat rounded, posterior border directed obliquely forward from about middle of disc to margin; and about apical quarter completely pale flavous.

Head with frons a little transverse, with a short median sulcus, extending between antennal tubercles, almost plane, with a strong semicircular sulcus anteriorly, curving round on the inner side

of the eyes; antennal tubercles rather strongly raised, broadly concave between, widely separated; frons and vertex with scattered coarse punctures, interstices finely and closely punctured; with a few longitudinal feeble impressions in a row between upper lobes of eyes. Palpi with apical segments large, broad, strongly obliquely truncate apically. Eyes moderately large, very strongly emarginate; lower lobe strongly swollen, rather distinctly transverse, extending below the antennal insertion, about twice as tall as the gena; very coarsely faceted, isthmus to upper lobe about three facets wide; upper lobes rather small and narrow, widely separated by about three times the breadth of an upper lobe. Antennae only about a seventh longer than the body; scape rather robust, moderately swollen, moderately long, extending past the pronotal base; third segment extremely enlarged and swollen, subdepressed, about twice as long as scape; fourth segment short, about two thirds as long as scape, about a third as long as third segment; fifth segment about one and three-quarters as long as fourth, slightly longer than scape; sixth subequal to fifth; seventh to tenth segments very gradually decreasing; apical, eleventh, segment slightly longer than preapical; segments four to about eight, feebly longitudinally carinate above; scape moderately coarsely, not very closely punctured, nitid; third segment with not very coarse, not very close punctures laterally, above very finely and closely punctured, rather matt; remaining segments very finely and closely punctured, matt; segments from third very finely pubescent; segments from scape to sixth sparsely, elongately setose below.

Pronotum subcylindrical, elongate, one and a half times as long as broad; feebly broader basally than apically; almost parallel-sided, but feebly irregular, very feebly rounded medially, feebly and broadly constricted premedially and prebasally; disc more or less regularly convex, slightly irregular, with two low, very obtuse, broad, premedian tumescences; very finely and closely punctured, except on the glabrous median and lateral areas which are almost impunctate. Scutellum subtriangular, rather narrowly rounded apically; broadly tumescent; finely and closely punctured, densely pubescent.

Elytra elongate, subcylindrical, almost three times as long as

pronotum, three times as long as broad; subparallel-sided, with a very feeble premedian constriction, to about apical third, thence broadly rounded to apices, which have the marginal angle somewhat attenuate and strongly spinose, inwardly obliquely truncate, sutural angle broadly rounded; each elytron with four rows of widely spaced setigerous punctures on anterior half and five rows on posterior half: a subsutural, two discal on anterior half, three on posterior half, and one along junction of disc and epipleuron; interstices almost impunctate, with only a few, scattered, small punctures.

Underside mainly nitid, less so where thinly pubescent and more closely punctured; prosternum impunctate over anterior half, elsewhere finely and fairly sparsely punctured medially, more closely laterally; metasternum with a few, scattered, very large punctures. Prosternal process very narrow, broadly explanate apically; strongly rounded, moderately lower than the coxae; about an eighth as broad as a procoxal cavity; procoxal cavities moderately widely open posteriorly. Mesosternal process moderately broad, almost half as broad as a mesocoxal cavity, nearly four times as broad as the prosternal process; rather strongly rounded and feebly tumescent anteriorly, subplanate above; apex moderately strongly explanate, the lateral angles subacute and projecting into a cavity in the mesocoxae; apex very broadly rounded, almost truncate, with a small, but distinct, median emargination. Mesocoxal cavities closed to mesepimera. Abdominal segments smooth, with a few elongate setae; apical ventrite more or less semicircular, transverse, slightly shorter than preapical, moderately broadly truncate apically.

Legs moderately elongate, fairly slender; apex of metafemora extending to about middle of apical ventrite; profemora clavate, the others more gradually subpedunculo-clavate, the posterior least swollen; apices of meso- and metafemora angular, but not spinous; tibiae rather feebly longitudinally carinate above and below, mainly confined to proximal halves, very feebly on protibiae and above on others; tarsi moderately elongate and fairly robust, the anterior somewhat broadened and fringed; first metatarsal segment only a little more than half as long as the following two segments united.

Female. Unknown.

Length: 10–11.2 mm. Breadth: 2.1–2.3 mm.

TRINIDAD: St. Augustine, V. 1959, F. D. Bennett (♂, Holotype).
Santa Margarita Hill, V. 1959, at light (♂, Paratype).

Holotype (male) in Entomological Research Institute, Department of Agriculture, Ottawa. Paratype (male) placed in the E. F. Gilmour Collection.

In the genus *Phormesium* Thomson up to present there are known only three species, viz., *P. albinum* Bates, *P. eudesmoides* Thomson and *P. fusiferum* Serville, with pale maculae on each elytron. The present new species can however be easily distinguished from each of these by the posterior pale area covering the elytral apex, not simply postmedian to preapical, and the anterior fascia very broad and covering most of the anterior half.

Tribe CALLIDIOPINI

Cylindera flava (Fabr.)

CAYMAN ISLANDS: Grand Cayman, 24. XI. 1962, C. B. Lewis and P. Rice (2♀, Inst. Sci. Kingston, and Gilmour Coll.).

ST. MARTIN: Philipsburg, 28. V. 1949, Hummelinck (1♀); 25. VII. 1955, at light, Hummelinck (1♀).

SABA: Windwardside, XII. 1956, R. H. Cobben (1♀).

BARBUDA: Codrington Village, 5. VII. 1955, at light, Hummelinck (1♀).

MONTSERRAT: Woodlands, 250 ft., XI. 1959, C. R. Proctor (2♀, Inst. Sci. Kingston, and Gilmour Coll.).

Tribe METHINI

Methia necydalea (Fabr.)

ST. BARTHÉLEMY: Lorient, 3. VI. 1949, Hummelinck (1 spec.).

ST. EUSTATIUS: I. 1957, R. H. Cobben (1 spec.).

Tribe CLYTINI

Neoclytus araneiformis (Olivier)

SABA: Windwardside, XII. 1956, R. H. Cobben (1♀).

Tribe TRACHYDERINI

Trachyderes succincta (Linn.)

TRINIDAD: St. Augustine, IX. 1956, R. H. Cobben (1♂).

Oxymerus luteus (Voet)

TRINIDAD: St. Augustine, IX. 1956, R. H. Cobben (1♀).

Subfamily LAMIINAE

Tribe APOMECCYNINI

Caribbeana genus novum

Male. Subovate, moderately elongate; rather small; pubescent. Head moderately concave between antennal tubercles; not retractile; frons elongate; eyes large, strongly emarginate not very coarsely faceted. Antennae about as long as body; scape moderately slender and fairly elongate; third segment elongate, longer than scape; scape without apical cicatrix.

Pronotum transverse, subcylindrical; broadly rounded and unarmed laterally; disc smooth, slightly convex; anterior and posterior transverse sulci feeble. Scutellum transverse, broadly rounded.

Elytra elongate, subovate; apices rather narrowly rounded; disc moderately strongly convex; broadly obtusely depressed along suture posteriorly, bordered laterally with an almost obsolete costa, and traces of a second costa more laterally; centrobasal area feebly tumescent.

Prosternal process broad, about half as broad as a procoxal cavity; low, broadly rounded; procoxal cavities closed posteriorly; procoxae globular. Mesosternal process very broad, as broad as a mesocoxal cavity; these latter closed to mesepimera. Abdominal segments gradually decreasing in length. Legs of moderate length; robust; all femora pedunculo-clavate, the clava strongly swollen, peduncle on anterior short; mesotibiae with a posterior short sulcus; tarsi moderately long, first segment of posterior about as long as the following two segments united; tarsal claws divergent.

Female. Unknown.

Genotype: *Caribbeana hebes* gen. nov. sp. nov.

This new genus belongs to the Tribe Apomecynini (sens. lat. Breuning) and in particular to the Tribe Ptericoptini, now included by BREUNING with the Apomecynini. It may be easily distinguished from the genus *Tethystola* Thomson, by the broad pro- and mesosternal processes and the pronotum completely unarmed laterally. In the structure of the scape, which is slender, it diverges from the other genera of Ptericoptini sensu strictu, and from most genera of Apomecynini s. lat. by the mesocoxal cavities closed externally.

***Caribbeana hebes* sp. nov.**

(Plate III fig. 3)

Male. Pitchy-black, covered with dull, greyish-brown and brown, vaguely variegated, rather dense pubescence, somewhat greyer laterally and beneath; without distinct markings except for a dark brown basal macula on the pronotum laterally, which is continuous with a similar marking on the anterior underside of the elytral humerus.

Head finely and fairly closely punctured; frons with a fine median longitudinal line which extends to the posterior border of the head; frons elongate, about one and a quarter times taller than broad, feebly convex; antennal tubercles moderately swollen, slightly raised, widely separated, broadly concave between; eyes with lower lobes fairly large, subquadrate, about one and a third times as tall as the gena, about three-fifths as broad as the frons; upper lobes fairly closely approaching, separated by about the breadth of an upper lobe. Antennae about as long as body (segments missing after ninth); scape moderately slender and moderately elongate, extending to slightly past middle of pronotum; third segment elongate, about a fifth longer than scape; fifth segment distinctly shorter, about three-fifths as long as fourth; following segments (at least to ninth) gradually, but distinctly decreasing; without setae above or below; segments finely and fairly closely punctured; pubescent.

Pronotum transverse, almost one and a half times as broad as long; distinctly wider basally than apically; broadly rounded and completely unarmed laterally; with very feeble and shallow pre-apical and prebasal transverse sulci; feebly constricted prebasally; disc smooth, not very strongly convex; completely, except past the sulci, regularly and fairly closely, moderately coarsely punctured; interstices closely micropunctured. Scutellum transverse, nearly twice as broad as long; broadly rounded; very finely, fairly closely punctured.

Elytra elongate-ovate; about three and a half times as long as the pronotum, about one and three-quarter times as long as humeral breadth; rather parallel-sided on basal half, thence broadly rounded to apices, which are rather narrowly separately rounded; broadly, shallowly subdepressed subsuturally over a little more than posterior half, outer border of depression subcostate, and a further very feeble costa latero-discal to that; centrobasal area feebly crested; rather strongly convex laterally and posteriorly; wholly fairly closely, moderately coarsely punctured, these more distinct basally, becoming rather smaller apically, and much smaller over about apical third or quarter; interstices very finely and closely punctured.

Underside in the main very finely and fairly closely punctured, except the submentum which is nitid and impunctate, except in a strong, deep, anterior transverse sulcus. Prosternal process broad, low, feebly rounded, slightly more than half as broad as a procoxal cavity. Mesosternal process very broad, about as broad as a meso-coxal cavity, about one and a half times as broad as the prosternal process; subplanate above, strongly rounded anteriorly; slightly, acutely explanate apically; apex very broadly subtruncate, extremely feebly emarginate. Abdomen short, about equal in length to metasternum; apical ventrite broadly rounded, slightly longer than preapical, rather narrowly emarginate apically; the emargination densely and fairly lengthily fringed, Pygidium short, broad; moderately broadly, shallowly emarginate and fringed apically.

Legs moderately long, robust; femora strongly pedunculo-clavate, the peduncle on anterior short. First metatarsal segment about equal in length to the following two segments united.

Female. Unknown.

Length: 7 mm. Breadth: 2.6 mm.

ST. EUSTATIUS: I. 1957, at light, R. H. Cobben (1♂).

Holotype (male) placed in the E. F. Gilmour Collection. Unique.

Tribe ONCIDERINI

Cacostola apicalis sp. nov.

(Plate III fig. 4)

Male. Elongate-oblong, slender, cylindrical. Dark brown, clothed with only moderately dense ochrous-grey and greyish pubescence on head and pronotum; frons light grey pubescent; scutellum very densely ochraceous pubescent; elytra rather more sparsely greyish pubescent, about apical eighth contrastingly lighter, pale ochrous-grey pubescent. Underside, legs and antennae rather thinly tawny-grey pubescent; antennal segments from third vaguely and indistinctly lighter greyish basally.

Head coarsely, moderately closely punctured, frons rather more finely punctured; frons slightly longer than broad, subrectangular; broadly concave between antennal tubercles, which are widely separated prominent, armed with a short tooth; clypeus rather distinctly transversely convex. Eyes coarsely faceted; strongly emarginate; lower lobe large, broadly elongately subtriangular, about three times as tall as gena; upper lobes rather narrow (about five facets wide), quite widely separated by about twice the breadth of an upper lobe. Antennae about a seventh longer than the body; sparsely setose below from third segment; scape short, fairly robust, extending very slightly past pronotal apex; third segment about one and a half times as long as scape, very feebly arcuate; fourth segment about equal in length to third; following segments gradually decreasing.

Pronotum very slightly broader than long, slightly narrower apically than basally; sides slightly rounded, unarmed; distinctly constricted prebasally; apical transverse sulcus shallow and less broad; coarsely, rather closely punctured, with a few extremely

large punctures on midline discally. Scutellum subquadrate, parallel-sided, apex broadly rounded; somewhat convex laterally, subdepressed medio-longitudinally; finely and closely punctured.

Elytra subparallel-sided, broadly and feebly constricted medially; broadly rounded from about apical sixth to apices, which are separately rather narrowly rounded, in fact almost strongly obliquely internally truncate with both angles rounded; disc distinctly longitudinally uneven, feebly tumescent centrobasally, with a very broad, obtuse costiform swelling running from posthumeraly, obliquely to apical declivity; completely coarsely, closely, rather irregularly punctured.

Underside coarsely, only moderately closely punctured, these sparser and smaller towards apex, interstices finely and closely punctured. Prosternal process fairly narrow, about a quarter the breadth of a procoxal cavity; strongly and regularly rounded, a little lower than coxae; broadly and strongly explanate apically. Mesosternal process narrow, about equal to prosternal process; rather strongly declivous anteriorly; slightly explanate apically, lateral angles subacute, apex broadly rounded. Apical ventrite about one and a half times as long as fourth, without a depression; apex broadly, shallowly emarginate. Pygidium broadly, very broadly, feebly rounded apically.

Legs short; procoxae globosely subconical, unarmed; femora strongly clavate. First metatarsal segment about two-thirds as long as following two united.

Female. Unknown.

Length: 8–8.2 mm. Breadth: 1.4–1.5 mm.

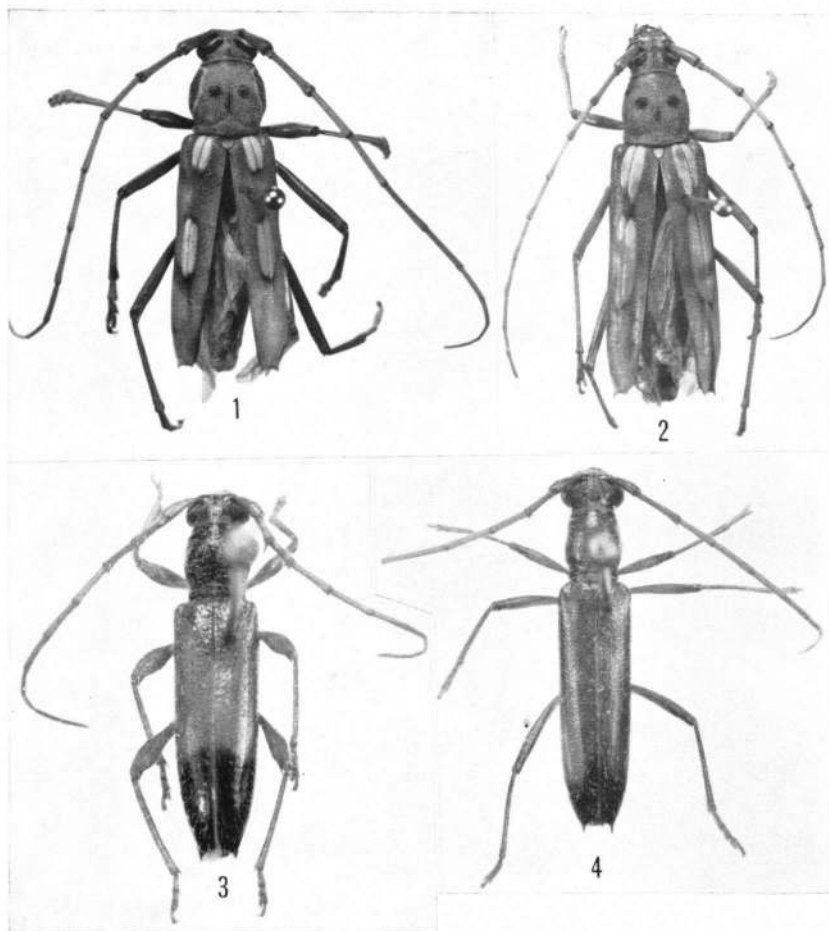
TRINIDAD: Santa Margarita Hill, V. 1959, at light (2♂).

Holotype (male) in Entomological Research Institute, Department of Agriculture, Ottawa; Paratype (male) placed in the E. F. Gilmour Collection.

This distinct new species may be immediately distinguished from the others at present known in the genus *Cacostola* Thomson by having the light coloured elytral apex. It is possibly most closely

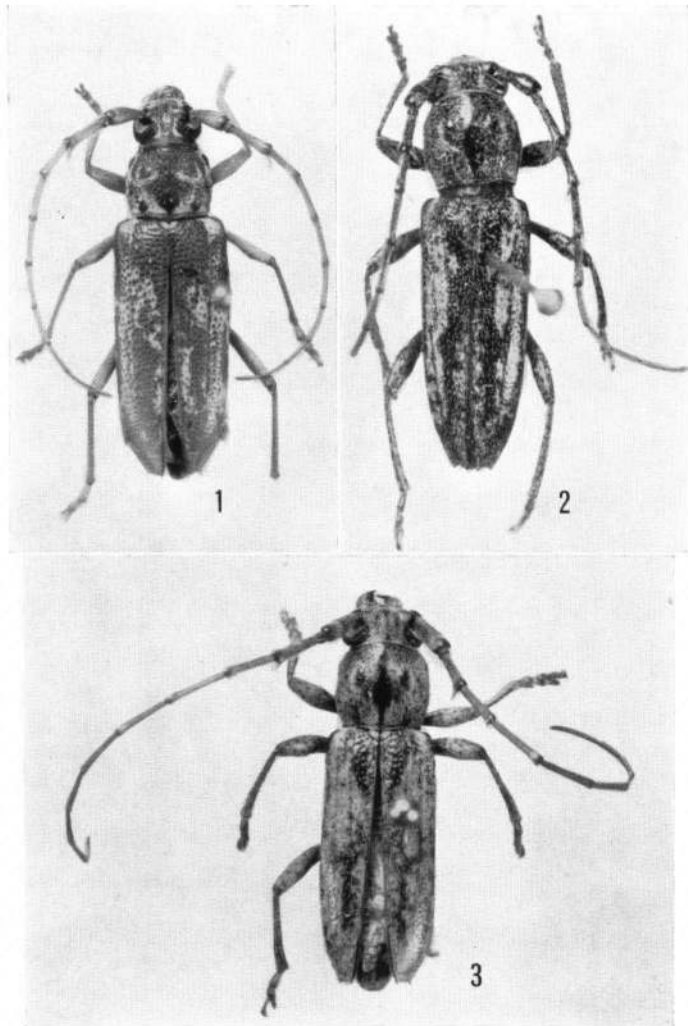
allied to *Cacostola simplex* Pascoe of the Guianas and Amazonas, through the very tall lower lobe of the eye which in this new species is three times as tall as gena and in *simplex* Pascoe more than twice as tall. It may however be distinguished by the same character as above, *C. simplex* Pascoe lacking the pale elytral apex and having two pale elytra vittae from the humeri, as well as several structural differences.

PLATE I



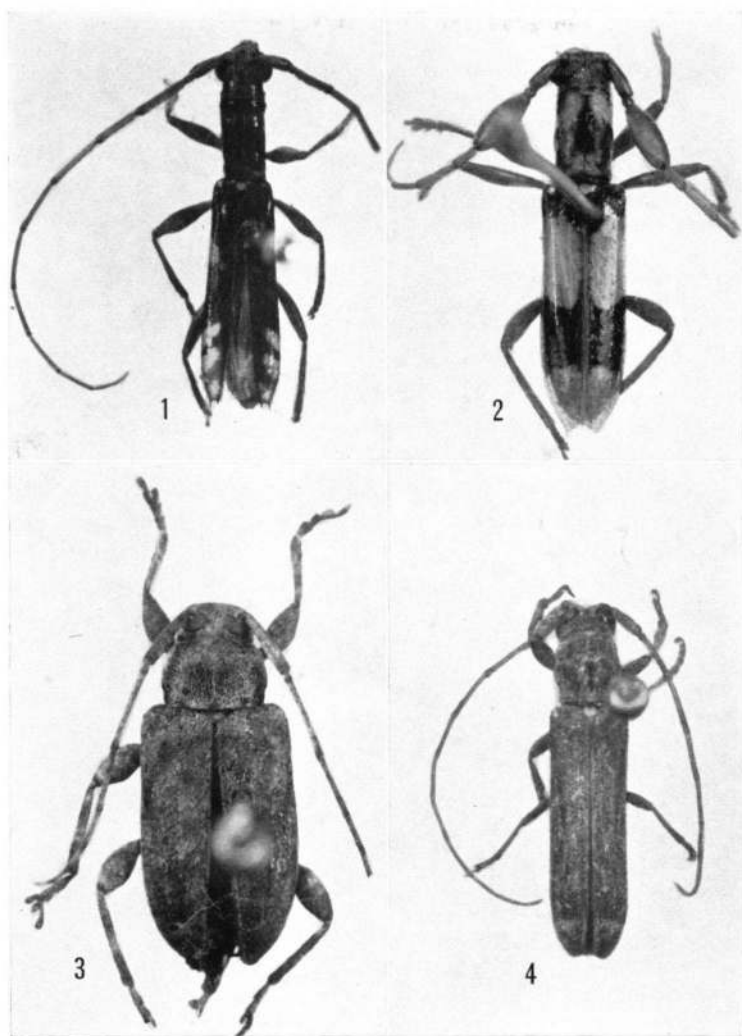
1. *Eburia virginensis* sp. nov. from St. John; ♂ holotype ($\times 2.4$).
2. *Eburia virginensis* sp. nov. from St. Croix; ♀ allotype ($\times 2.4$).
3. *Stizocera howdeni* sp. nov. from Trinidad; ♂ holotype ($\times 4.5$).
4. *Psyrassa trinidadensis* sp. nov. from Trinidad; ♂ holotype ($\times 4.4$).

PLATE II



1. *Elaphidion insulare* Newm. from St. Martin; ♀ ($\times 2.6$).
2. *Elaphidion cobbeni* sp. nov. from St. Eustatius; ♂ holotype ($\times 3.6$).
3. *Elaphidion hummelincki* sp. nov. from St. Martin; ♀ holotype ($\times 3.5$).

PLATE III



1. *Compsa macra* Thoms. from Trinidad; ($\times 5.6$).
2. *Phormesium trinidadensis* sp. nov. from Trinidad; ♂ holotype ($\times 4.5$).
3. *Caribbeana hebes* gen. nov., sp. nov. from St. Eustatius; ♂ holotype ($\times 6.8$).
4. *Cacostola apicalis* sp. nov. from Trinidad; ♂ holotype ($\times 5.9$).